

SAMSUNG® CLP-325

TONER CARTRIDGE REMANUFACTURING INSTRUCTIONS



SAMSUNG CLP-325 TONER CARTRIDGE

REMANUFACTURING THE SAMSUNG CLP-325 COLOR TONER CARTRIDGES

By Mike Josiah and the Technical Staff at UniNet

The Samsung CLP-325 printers are based on a 16ppm black and 4ppm color Samsung engine. It has a first-page-out in less than 14 seconds monochrome, and 26 seconds color. It has a maximum resolution of up to 2400 dpi and prints at 4ppm color/17ppm monochrome.

These machines have a very small footprint at 15.3" x 9.6" x 12.3" The machines are small and the toner cartridges are also small (thin). These are very simple cartridges to remanufacture. With the stated low yield, you could be seeing a lot of these!

CARTRIDGES USED IN THIS SERIES

CLT-K407S	Black	1,500 pages	\$61.99 USD*
CLT-C407S	Cyan	1,000 pages	\$54.99 USD*
CLT-M407S	Magenta	1,000 pages	\$54.99 USD*
CLT-Y407S	Yellow	1,000 pages	\$54.99 USD*
CLT-R407	Imaging unit	24,000 pages black / 6,000 color	\$187.99 USD*
CLT-W409	Waste toner box	10,000 pages	\$12.99 USD*

*Pricing as of 2/10/2012, in U.S. American Dollars.

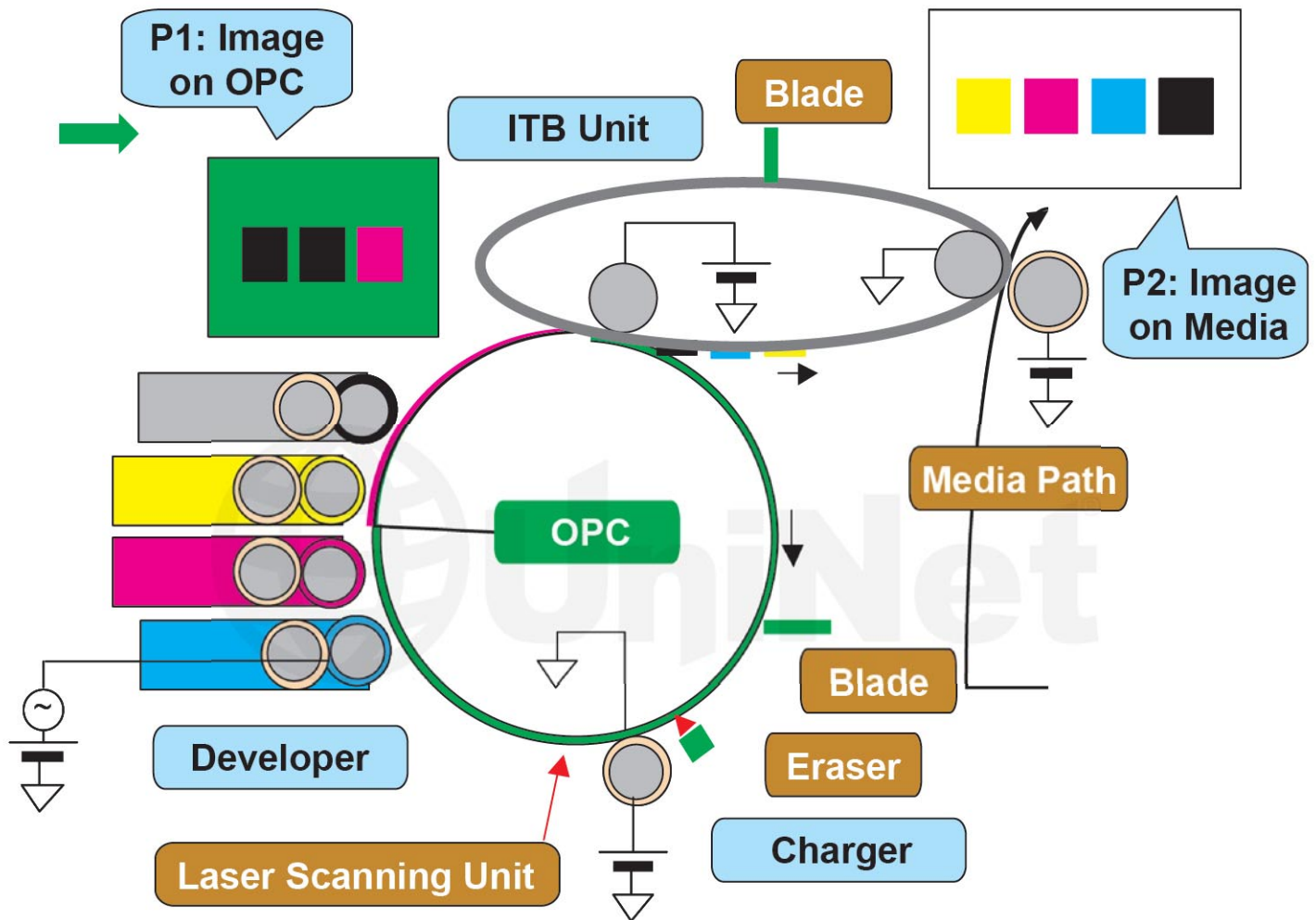
INTERNATIONAL PART NUMBERS

CLT-K4072S	Black	1,500 pages
CLT-C4072S	Cyan	1,000 pages
CLT-M4072S	Magenta	1,000 pages
CLT-Y4072S	Yellow	1,000 pages

New printer's ship with starter cartridges rated for 1,000 pages black and 700 pages color. These cartridges all use chips that must be replaced each cycle. Make sure you have the correct chip for yours and your printer's region.

PRINTERS BASED ON THIS ENGINE

Samsung CLP-320
Samsung CLP-320N
Samsung CLP-321
Samsung CLP-321N
Samsung CLP-325
Samsung CLP-325W
Samsung CLP-326



Shown here is the complete printing process as it pertains to this engine.

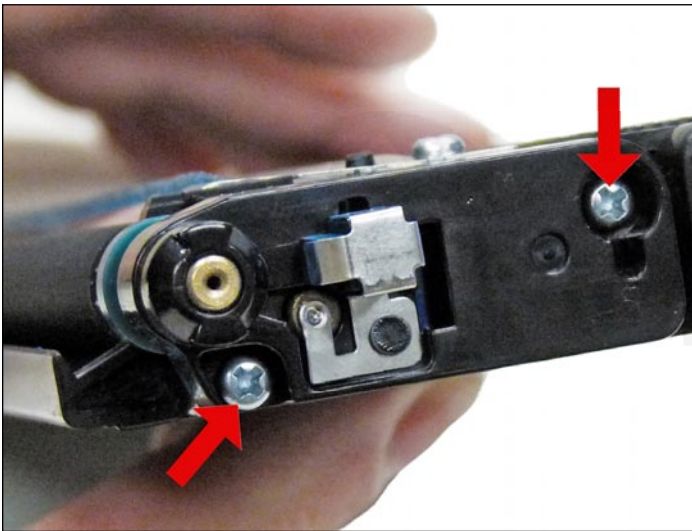
Cartridge troubleshooting, as well as how to run test pages, will be covered at the end of this instruction.

TOOLS NEEDED

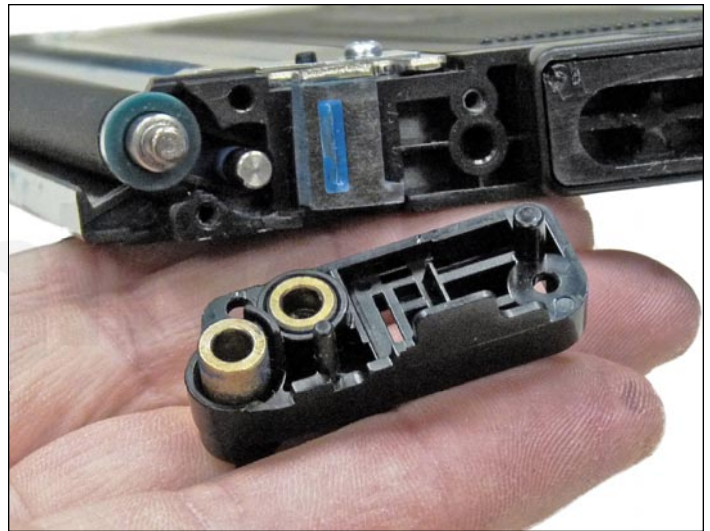
1. A #1 Phillips head screwdriver
2. A small common screwdriver (jewelers type)
3. Thin needle nose pliers
4. Toner approved vacuum

SUPPLIES NEEDED

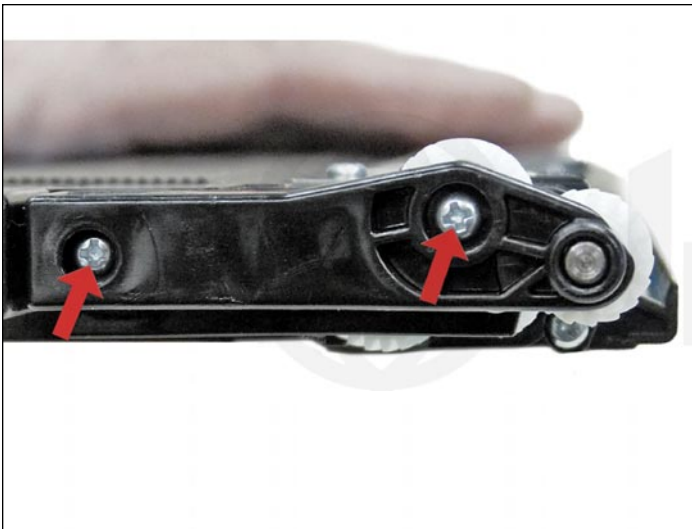
1. Replacement toner for use in the Samsung CLP-325
2. Replacement chip
3. Cotton swabs



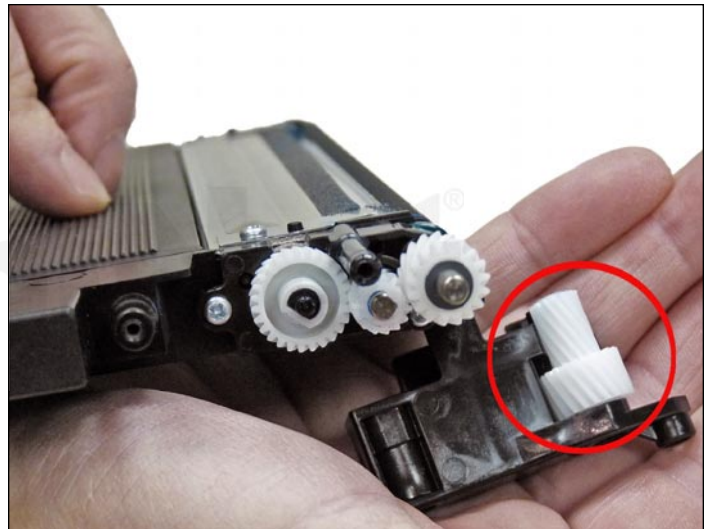
1. On the contact side of the cartridge, remove the two Phillips screws that are holding the end cap.



2. Pry off the end cap carefully with a small common screwdriver and remove it. Clean the metal bushings with a cotton swab and alcohol.



3. Remove the two screws on the gear side end cap.



4. Remove the gear cover. Note that the large double gear comes out together with the cover.

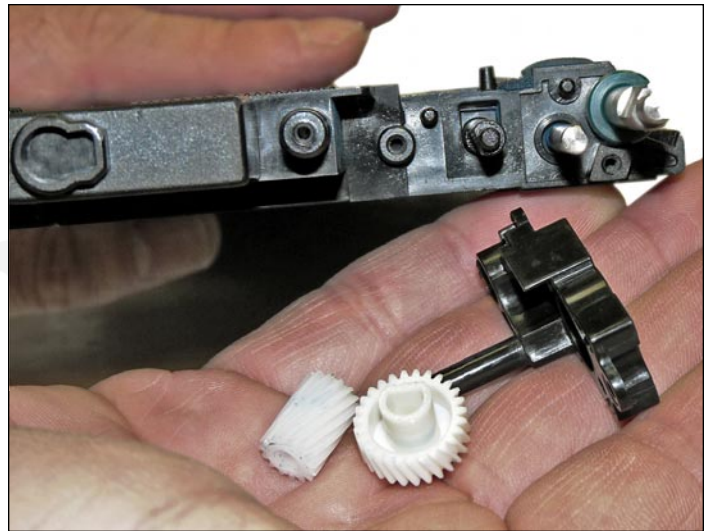
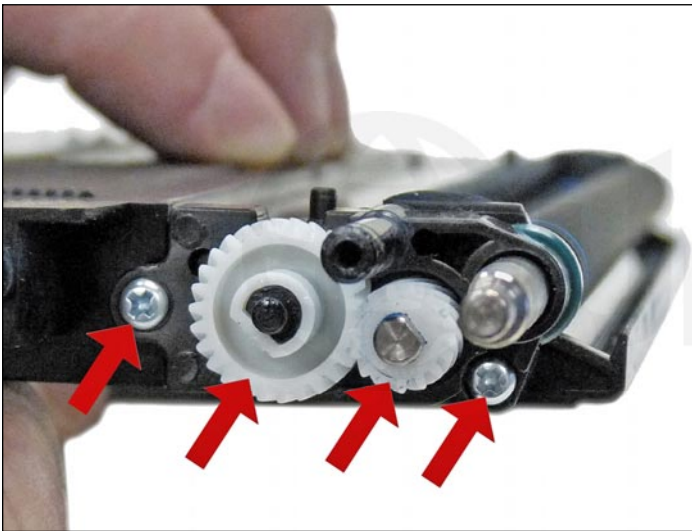


5. Remove the two screws from the top of the metal cover. The cover also acts as a doctor blade for the roller. Note the two cover/pressure plates on each side. They help provide pressure to the doctor blade. Do not lose them!

NOTE: Be very careful when removing the cover to protect the edge of the doctor blade. Any dent or mark on the doctor blade edge will seriously affect the quality of the print and possibly ruin the cartridge.



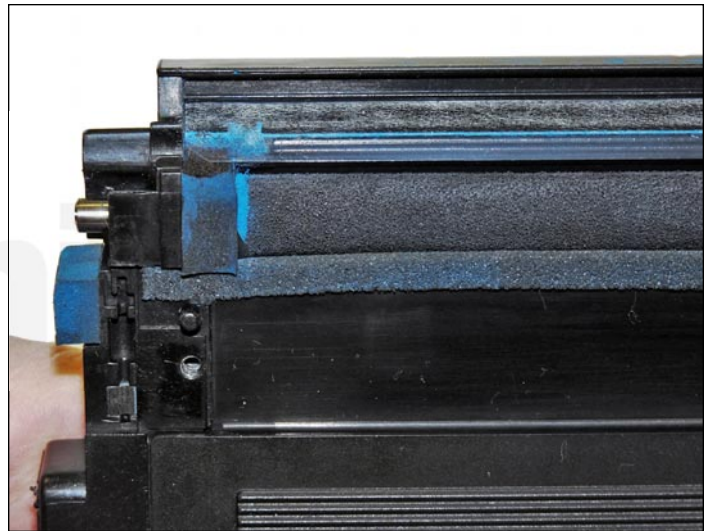
6. Remove the washer and developer roller drive gear from the developer roller shaft.



7. Remove the two remaining gears, the two screws, and the inner-gear plate.



8. Slide the developer roller out. Be careful not to lose the green bushings from either side of the shaft.



9. Wipe down the developer roller with a soft lint-free cloth. Vacuum the entire developing area, including the seals of the cover/doctor blade.



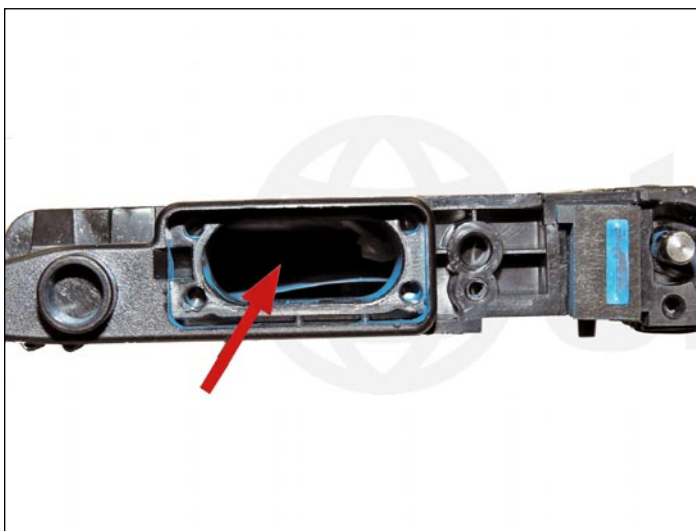
10. On the contact-side of the cartridge, pry the lid from the toner-load port.



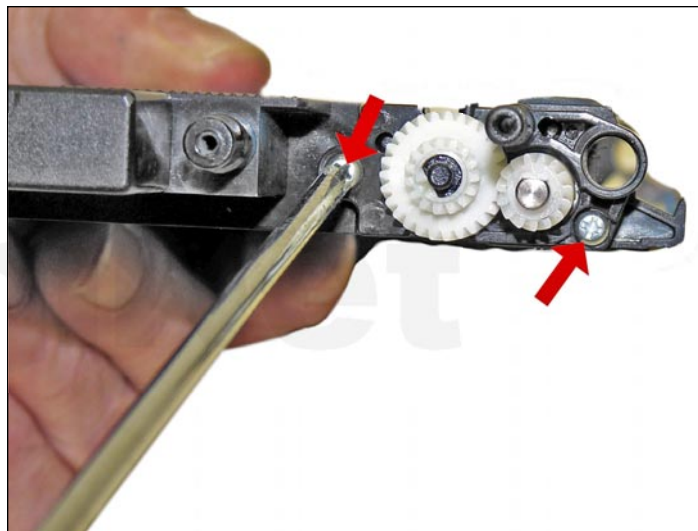
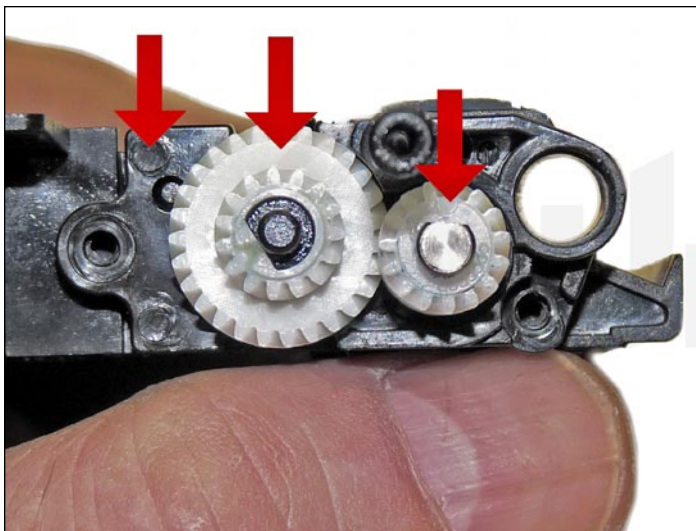
11. Remove the plug of the loading port, using thin needle-nose pliers.

Use modified pliers, as normal ones are too thick.

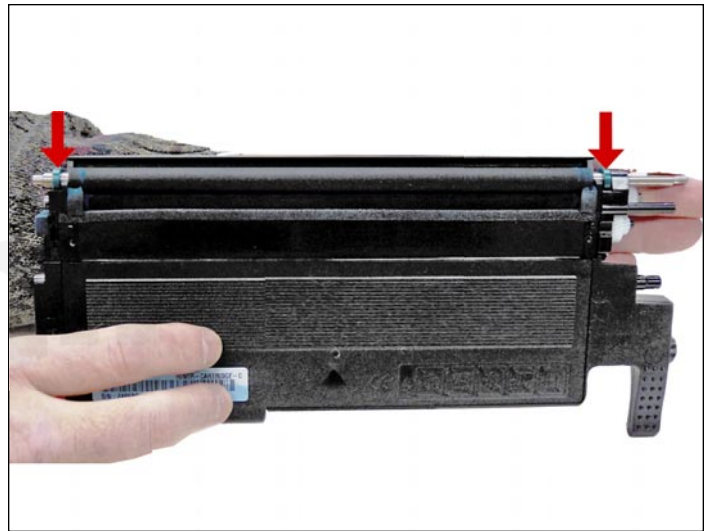
The pliers in the picture are old SX plastic pin-pullers (they are modified pin-pulling pliers).



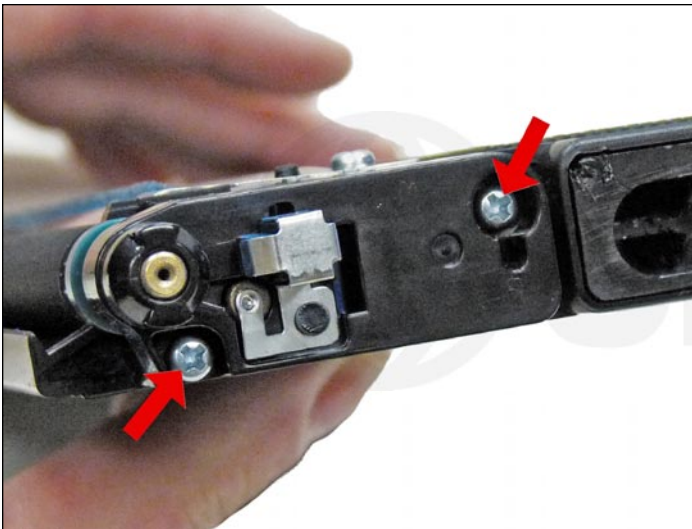
12. Vacuum the chamber clean.



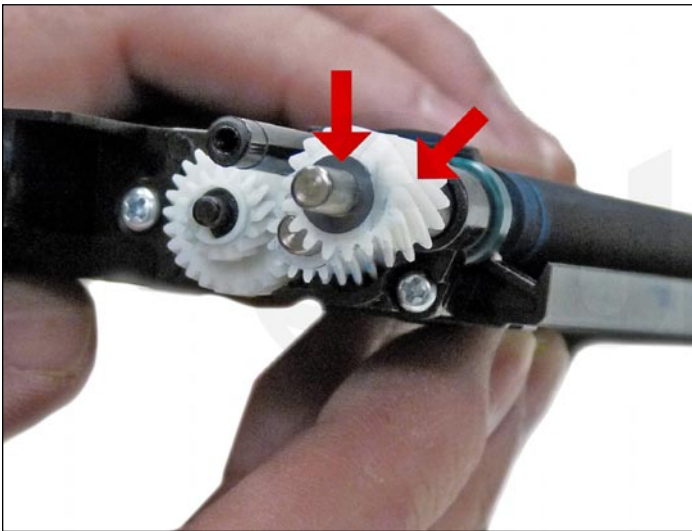
13. Install the inner-gear plate, two screws, and two gears.



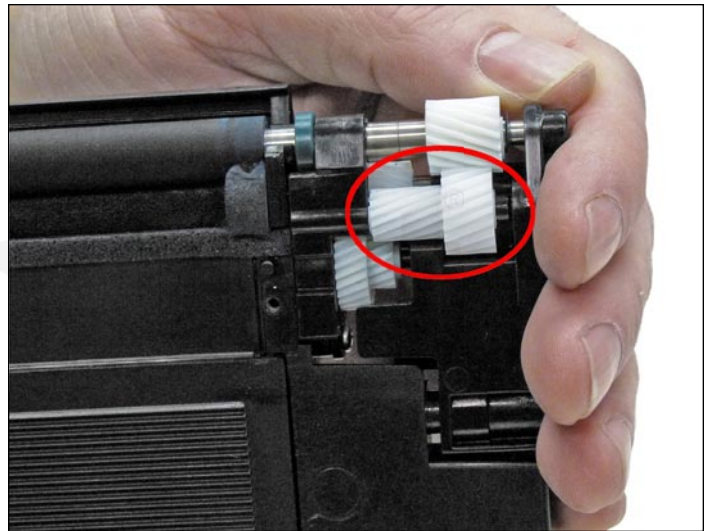
14. Install the developer roller with the respective green separation bushing in position, and insert the long keyed side of the shaft through the support. Install the opposite side green bushing.



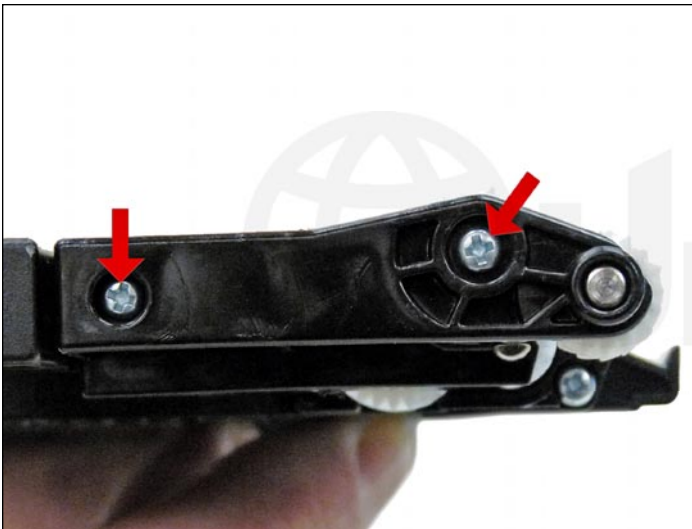
15. Install the contact-side end cap and two screws.



16. Install the developer roller drive gear and washer.



17. Install the gear-side end cap. Install the double-gear in the end cap, and press in place.



18. Install the two screws.

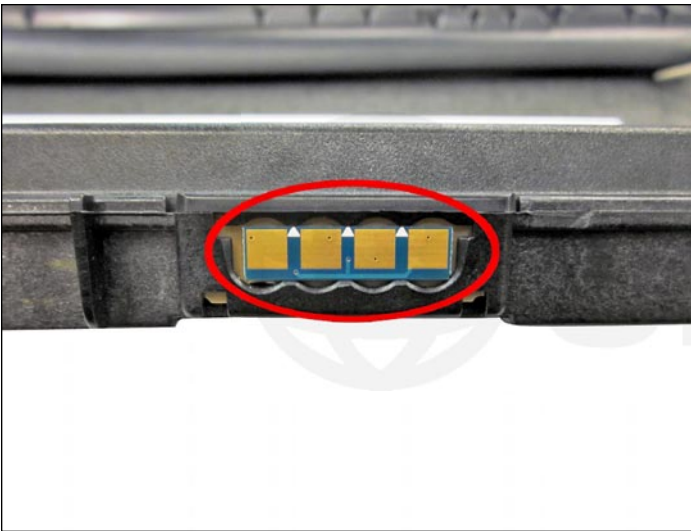


19. Carefully clean the cover/doctor blade and install it. Fit the individual doctor blade pressure plates on their proper sides and secure with the two screws.



20. Fill the cartridges with the correct color replacement toner for use in the Samsung CLP-325.

Install the fill plug.



REPLACING THE CHIP

21. With a clean swab, remove any toner that may be on the surface of the OEM chip (starter or standard chip).

Peel off the adhesive backing from the new aftermarket chip and place it ON TOP of the OEM chip. The OEM is NOT removed.

22. Install the developer roller cover.

REPETITIVE DEFECT CHART

OPC drum:	188.5 mm
Upper fuser roller:	86.4 mm
Second transfer roller:	54.64 mm
Lower fuser roller:	50.3 mm
Toner feed roller:	47.5 mm
First transfer roller:	43.8 mm
PCR:	37.7 mm
Developer roller:	26.0 mm

PRINTING TEST PAGES (CLP-320N/CLP-321N ONLY)**Demo Page:**

1. With the printer in the "Ready Mode" press and hold the CANCEL button for 2 seconds.
2. The demo page will print out.

Configuration Page:

1. With the printer in the "Ready Mode" press and hold the CANCEL button for 5 seconds until the status LED blinks quickly.
2. Release the button and the configuration page will print out.