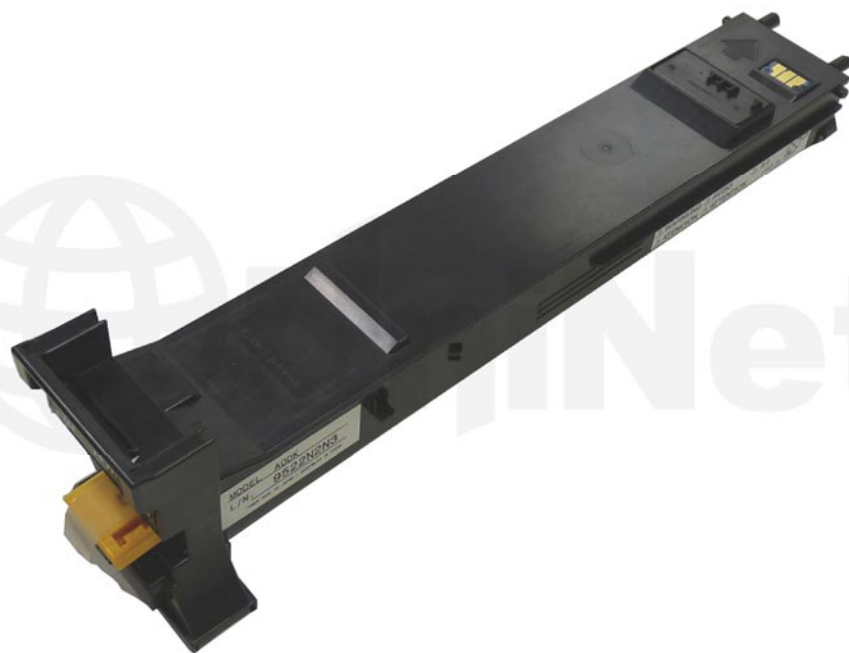


KONICA® MINOLTA MAGICOLOR 4600 SERIES EASY TO REMANUFACTURE CARTRIDGE INSTRUCTIONS



KONICA MINOLTA MAGICOLOR 4600 SERIES TONER CARTRIDGE

REMANUFACTURING THE KONICA MINOLTA MAGICOLOR 4600 SERIES TONER CARTRIDGES

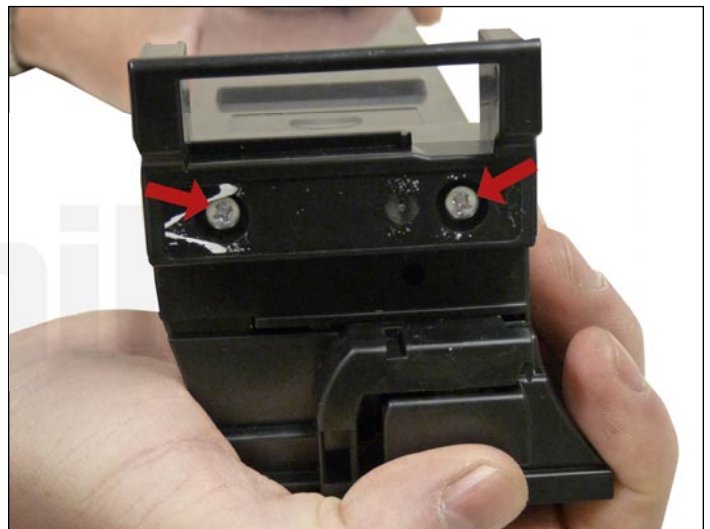
By Mike Josiah and the Technical Staff at UniNet



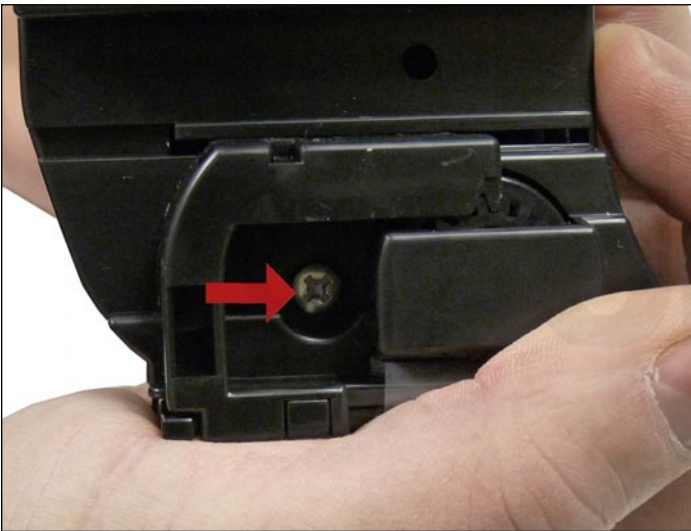
The Konica Minolta Magicolor 4600 Series cartridges are rated for 8,000 pages. The OEM numbers are A0DK132 Black, A0DK432 Cyan, A0DK332 Magenta, and A0DK232 Yellow. There is a chip that must be replaced every cycle.



1. Peel the label off the end cap.

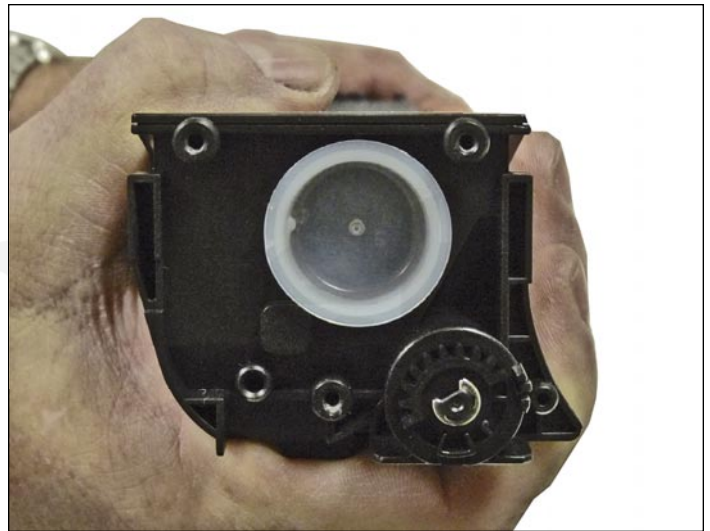


2. Remove the two screws.



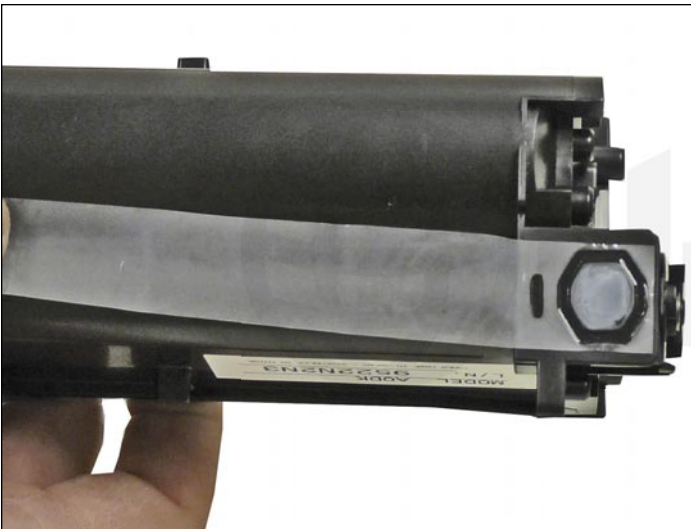
3. Slide the port cover over and remove the third screw.

Remove the end cap.



4. Remove the fill plug and clean out any remaining toner.

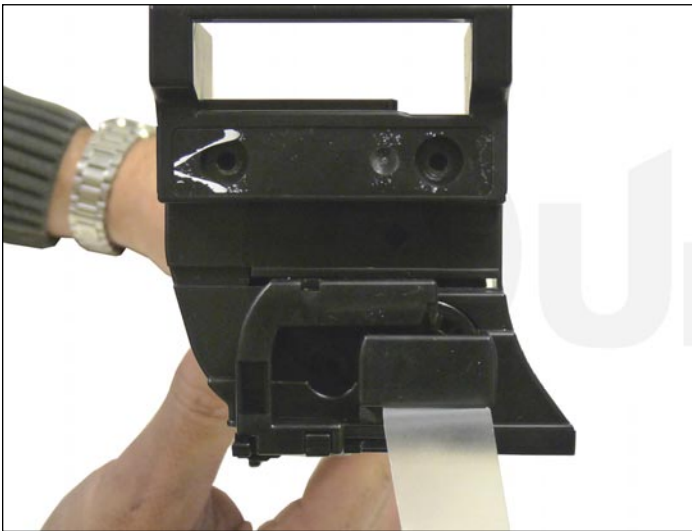
This fill plug is very soft. Be careful not to put a hole in it.



5. When a seal is available, install it now.

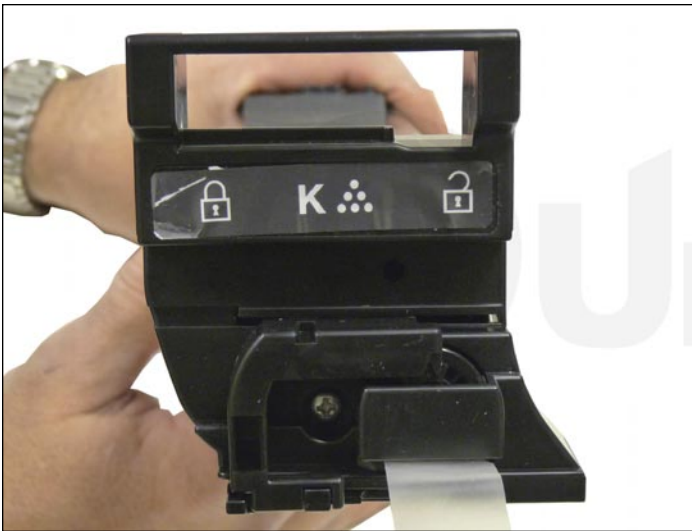


6. Turn the cartridge so the port opening is facing up and fill the cartridge with dedicated MC 4600 color toner. Replace the fill plug.

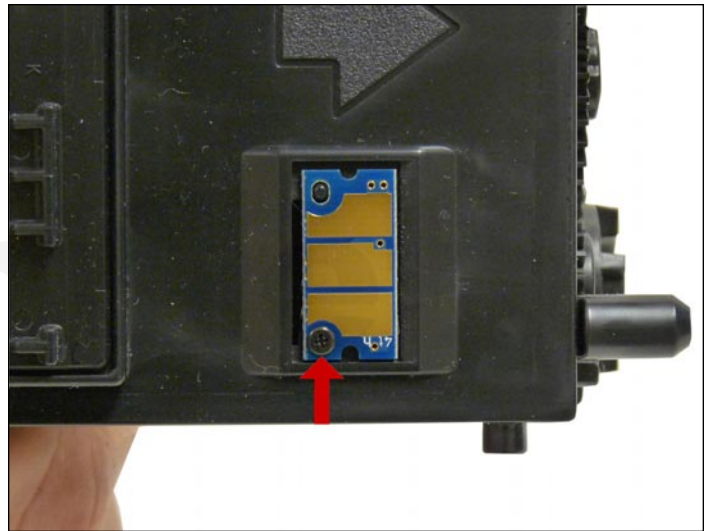


7. Install the end cap on the cartridge.

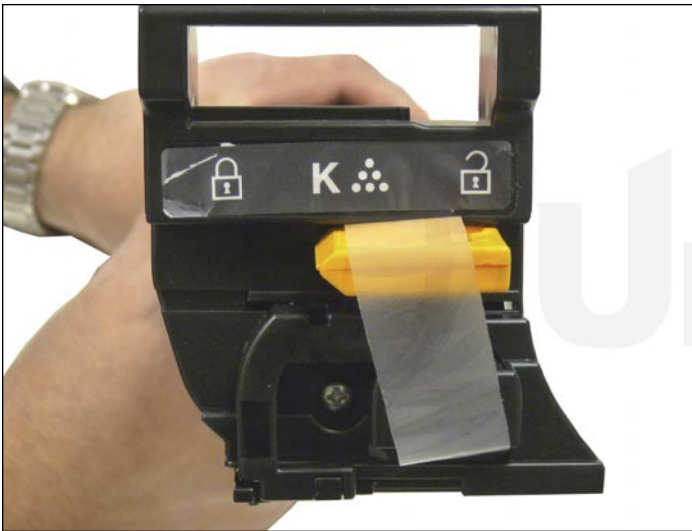
If a seal was installed, thread it through the slot. Set the port drive gear as shown and make sure it meshes properly.



8. Install the three screws and install the label.



9. Remove the screw on the chip. Replace the chip.



10. If a seal tab is available, install it on the seal and insert it into the cartridge as shown.