

SAMSUNG® CLP-600 • 650

TONER CARTRIDGE REMANUFACTURING INSTRUCTIONS



SAMSUNG® CLP-600/650 TONER CARTRIDGE

REMANUFACTURING THE SAMSUNG CLP-600/650 TONER CARTRIDGES

By Javier Gonzalez and the Technical Staff at UniNet

REQUIRED SUPPLIES

1. Toner for use in Samsung CLP-600/650 (170g black, 150g cyan, 150g magenta, 150 yellow)
2. Smartchip for use in Samsung CLP-600/650 (black, cyan, magenta, yellow)
3. Doctor blade (optional)
4. Wiper blade (optional)

REQUIRED TOOLS

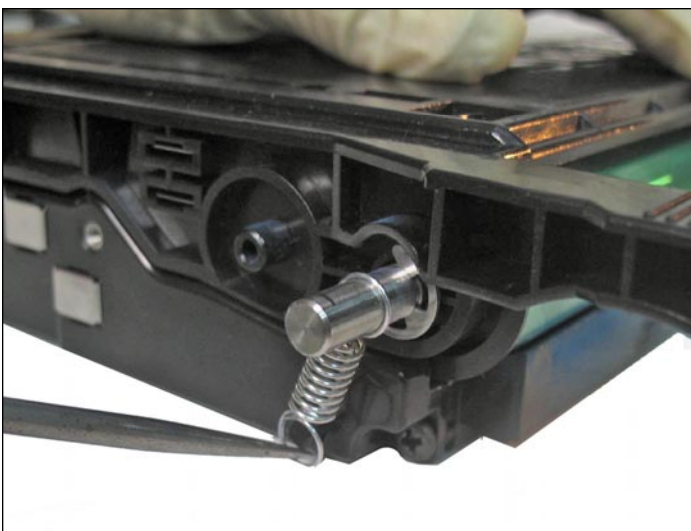
1. UniNet Metal pin extractor tool (part #11030) or similar metric screw
2. Phillips screwdriver
3. Flat head screwdriver (small and standard)
4. Pliers
5. Hook tool (angled and straight)



CARTRIDGE FRONT VIEW

CARTRIDGE CONTACT SIDE VIEW

CARTRIDGE GEAR SIDE VIEW



SEPARATING THE CARTRIDGE SECTIONS

1. Remove the tension spring that is attached to the contact end plate and drum axle.



2. Insert a small metric screw into the cartridge pin.

Turn clockwise until the screw has a tight hold on the pin.

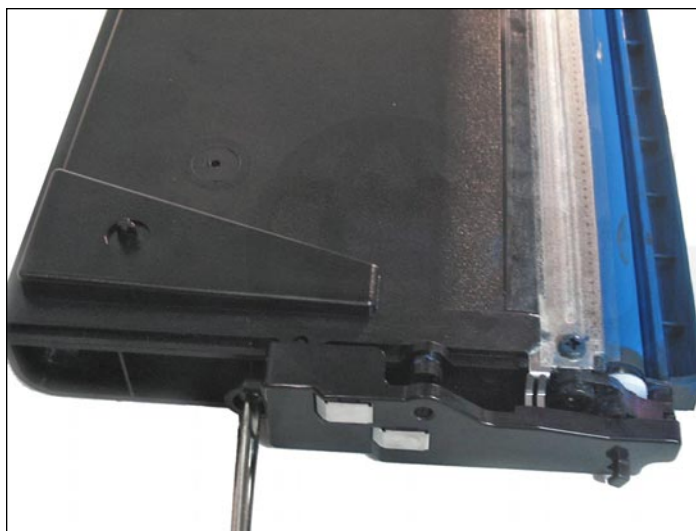
Then pull the pin out.



3. Repeat the same procedure for the opposite pin.

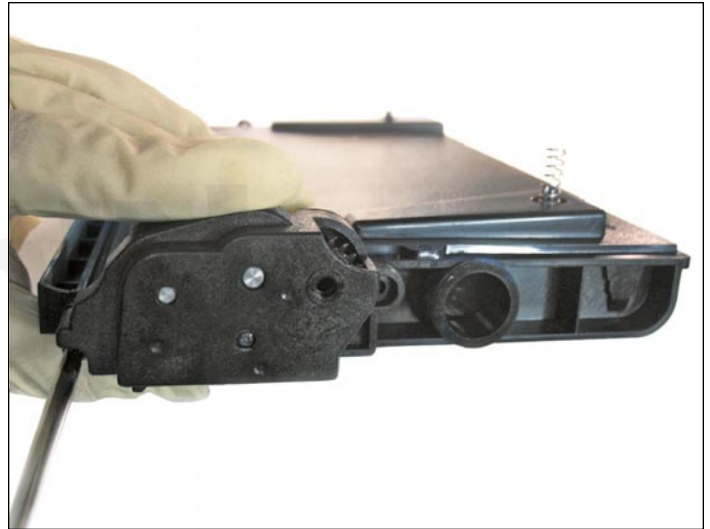


4. Separate the two halves as shown.



TONER CARTRIDGE DISASSEMBLY

5. First, remove the end plate screws and the end plate.



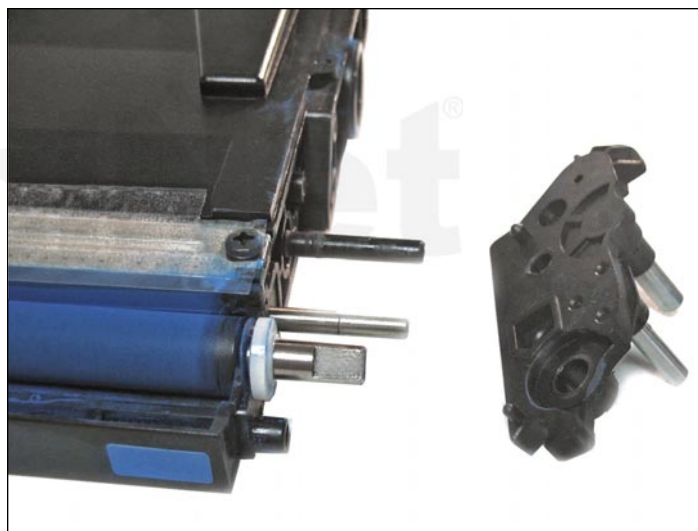
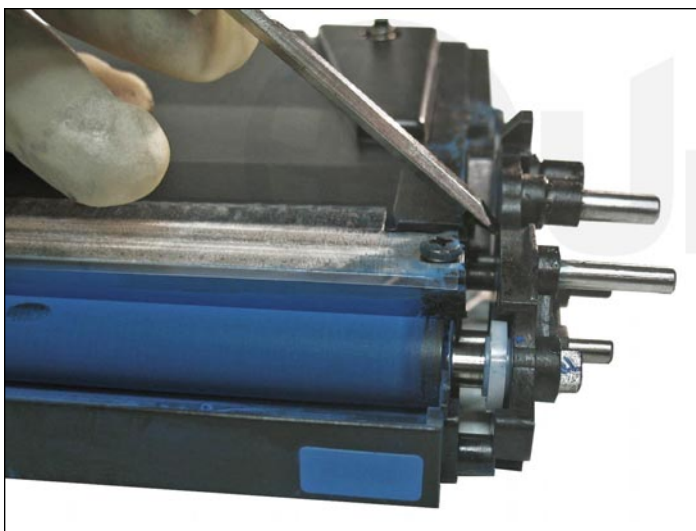
6. Remove the gear-side end plate screws, and the end plate.



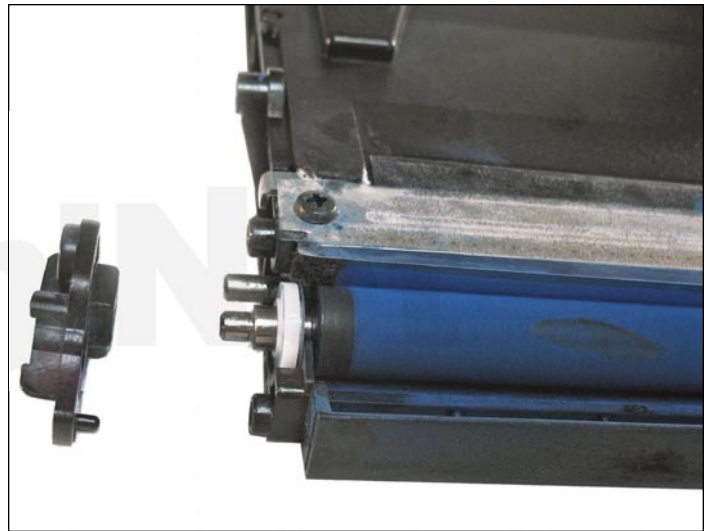
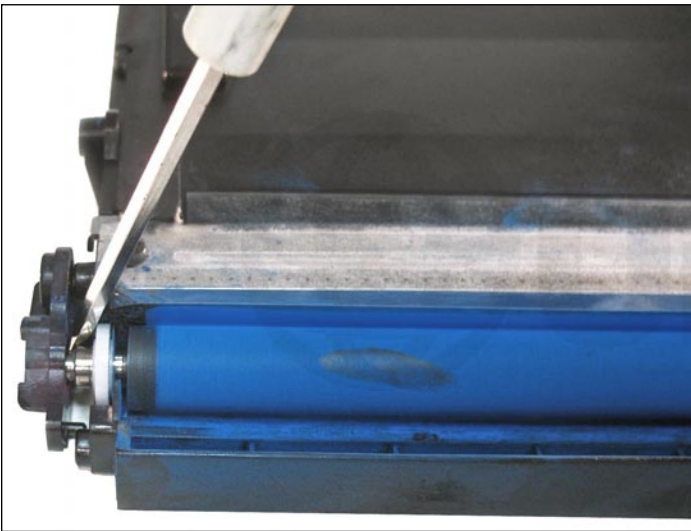
7. Remove the gears as shown.



8. Locate the gear-side support plate, and remove the screw that holds it in place.



9. Using a flat head screwdriver pry the loose plate away to remove it.



10. Remove the support plate from the contact side in the same manner.



11. Remove the developer roller as shown.



12. Locate the fill plug on the gear-side of the cartridge. Using a pair of pliers, carefully pull it out. Clean the cartridge and components thoroughly using compressed air, and refill with new toner. Reassemble the hopper and set aside.



DRUM UNIT DISSASSEMBLY

13. Locate the C-clips that hold the OPC drum axle in place on both ends. Using a small flat head screwdriver or straight hook tool, carefully slide them out.



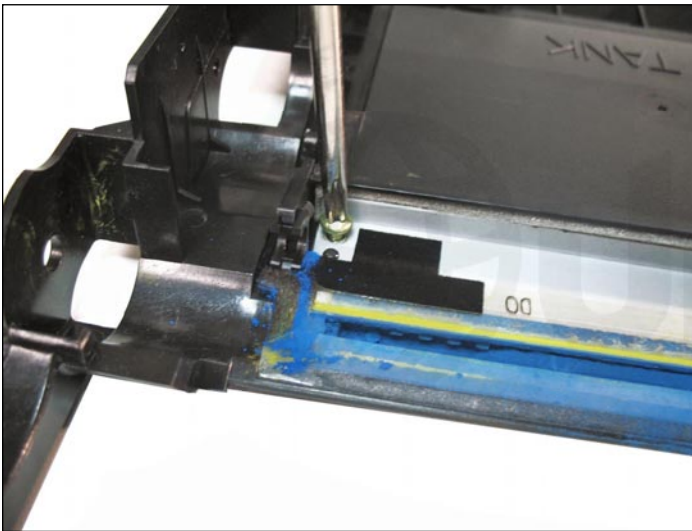
14. With the C-clips removed, we are now ready to remove the drum axle. Always slide the axle through the gear-side (shown) to remove it. Follow through until the axle is completely removed. **NOTE:** Pulling the axle out through the non-gear side could force a gap between the OPC contact and the axle. The end result would be blank pages due to loss of OPC conductivity.



15. Remove the OPC drum for cleaning or replacement.



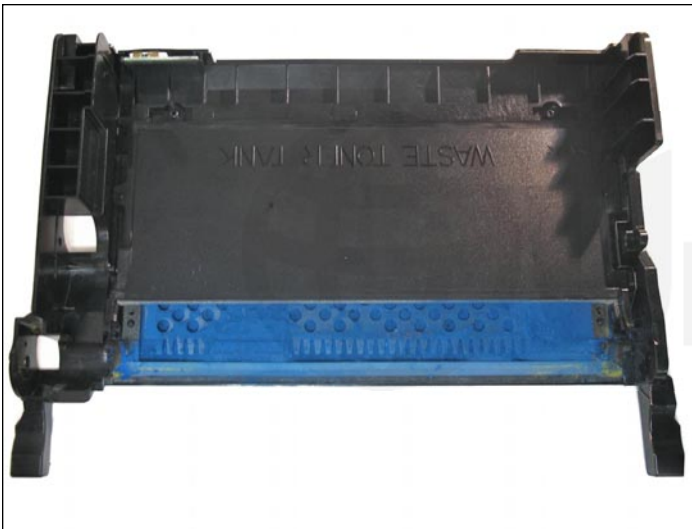
16. Remove the primary charge roller (PCR).



17. Remove the two wiper blade end screws.



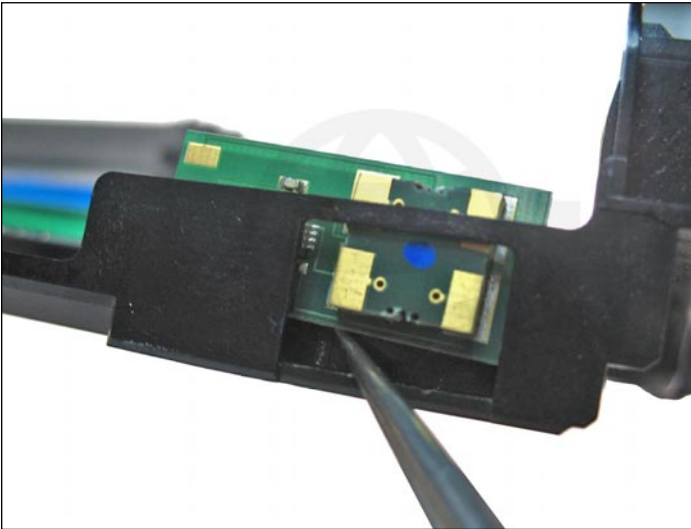
18. Lift the wiper blade out, using a pair of pliers.



19. Clean the drum unit and components thoroughly. Install the wiper blade and end screws first, followed by the PCR and OPC drum.

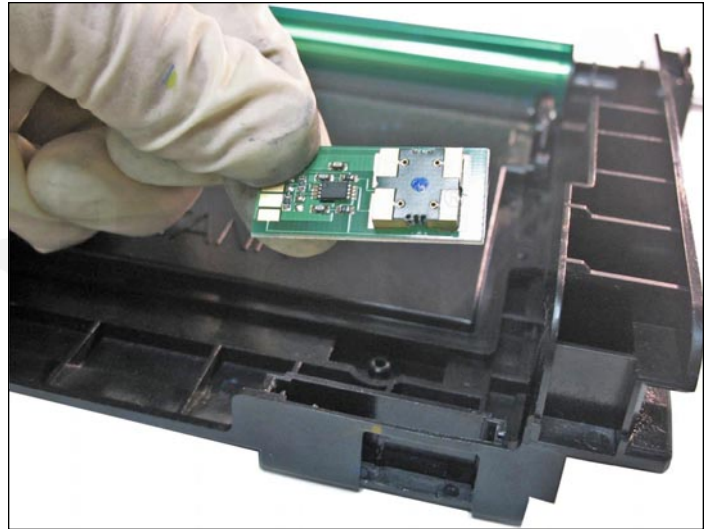


20. Always insert the drum axle through the non-gear side to install it. Inserting through the gear-side could damage the contact.



REPLACING THE CHIP

21. **NOTE:** You must replace the OEM chip, located at the rear of the drum unit, before joining the drum unit and toner hopper. Using a small flat head screwdriver, pry the chip upward as shown.



32. Remove the OEM and replace it with a new aftermarket chip. Join the cartridge halves and test the cartridge.